

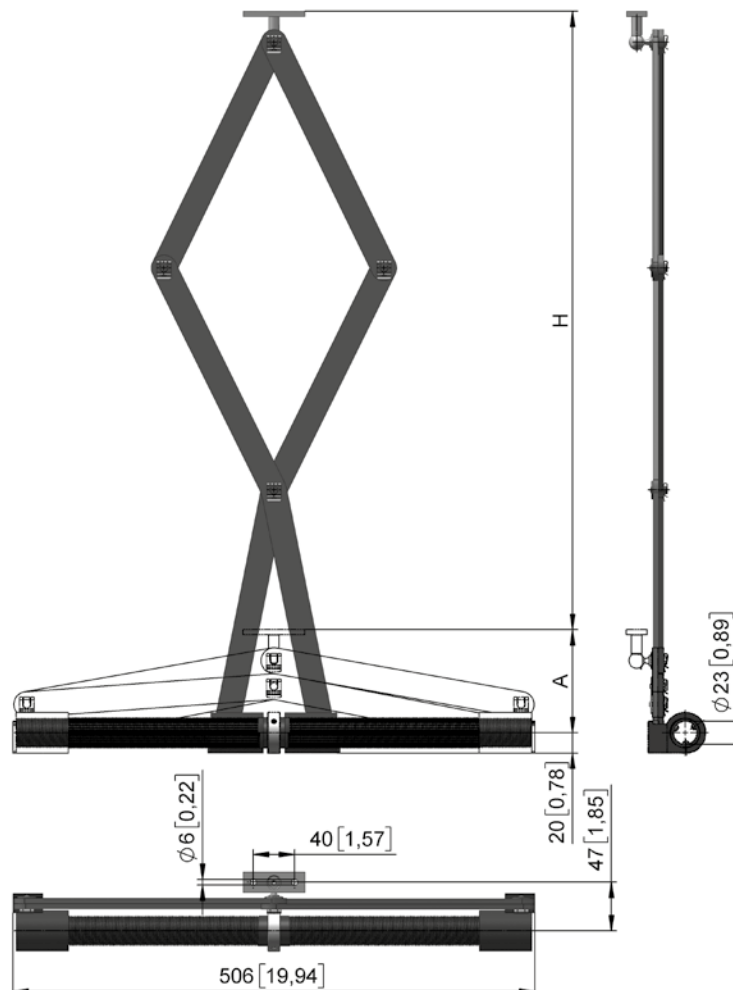
SGS 80 // Scissor gear units

200 N



- Self-locking scissor gear units for activation of ventilation flaps in winter gardens, conservatories, office buildings or glazed buildings.
- No activation elements, e.g. racks, protruding into the building, therefore easy installation of internal shade systems.
- Complete set consists of scissor gear, fastening bracket for window flaps and drive shaft bearing. Assembly on drive shaft $\varnothing 22$ mm with 3 set bolts.
- Scissor gear made of stainless steel, spindle made of special plastic.
- Drive torque for each scissor gear unit 8 Nm.

See application for in-line ventilation → Chapter **1**



mm [inch]

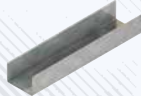
SGS 80

200 N



Version	Type no.	F [N]	H [mm]	v [mm/n]	A [mm]	Info	m [kg]
SGS 80.0206	62080.0201.06	200	600	26	100	Set incl. 1 x drive shaft bearing	1,9
SGS 80.0209	62080.0201.09	200	950	26	126	Set incl. 1 x drive shaft bearing	2,9

Accessories



SGZ 80.9802



SGZ 80.9803



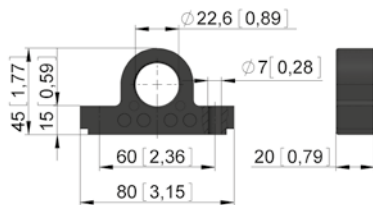
BKS 35.0622



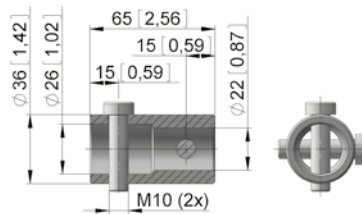
ARV 60.1034

Version	Type no.	Info	m [kg]
SGZ 80.9801	62080.9801.01	Drive shaft // L = 3000 mm, \varnothing 22 mm	3,1
SGZ 80.9802	62080.9802.01	Cover profile // L = 3000 mm // W = 83.5 mm // H = 55 mm	2,9
SGZ 80.9803	62080.9803.01	Drive shaft bearing	0,1
BKS 35.0622	20735.0665.22	Bush coupling	0,3
ARV 60.1034	81660.1034.2206	Tube coupling	0,2

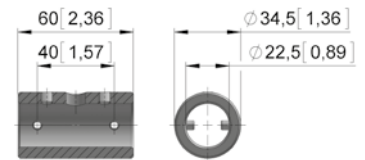
SGZ 80.98
Drive shaft bearing



BKS 35.06
Bush coupling



ARV 60.10
Tube coupling



mm [inch]